

INUIT MARINE MONITORING PROGRAM – Pilot Project



Communities have wanted to know more about what ships are passing through arctic waters



NTI will do a pilot using hardware (AIS) and experts (HTO members) to locate and document ships



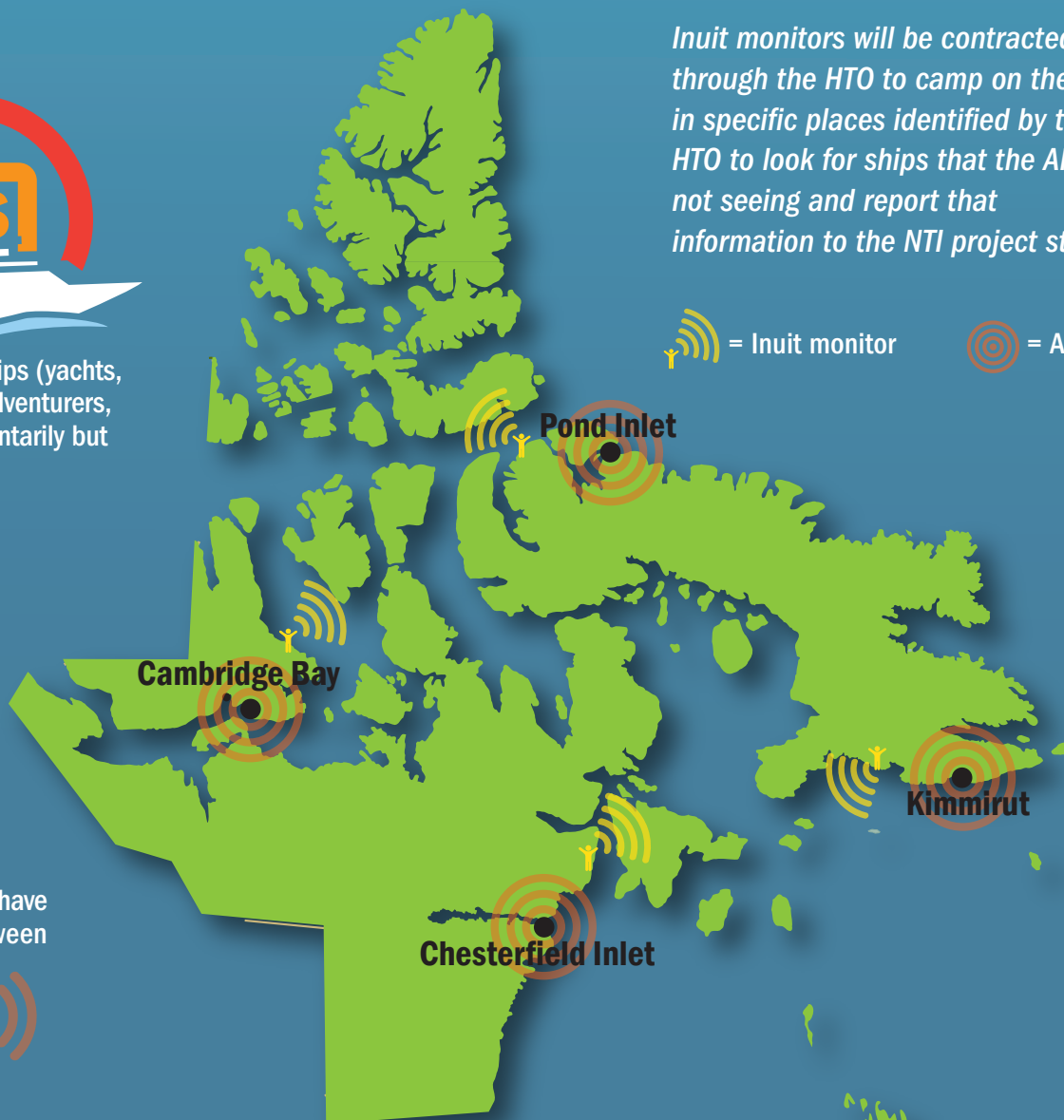
Large ships have AIS on board that the projects AIS stations can pick up and send to a central receiver monitored by NTI project people



Some smaller ships (yachts, pleasure craft, adventurers, etc) use AIS voluntarily but many do not

Inuit monitors will be contracted through the HTO to camp on the land in specific places identified by the HTO to look for ships that the AIS is not seeing and report that information to the NTI project staff

= Inuit monitor = AIS range



The AIS stations have a range of between

